

Campanile Montpellier Est - le Millénaire ***

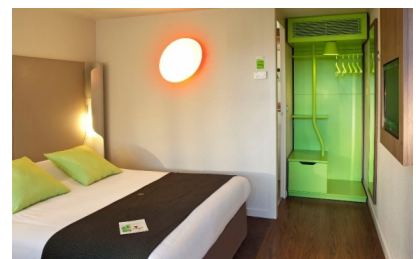
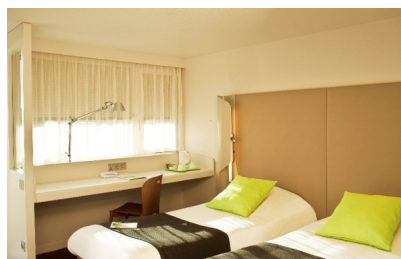
Hotels

MONTPELLIER - Odysseum



Our hotel-restaurant is located in the heart of the Millénaire district, at the entrance of the city. The front desk is opened 24h/24. The rooms completely renovated are well equipped: bathrooms with bath or shower, hair dryer, air conditioned, LCD TV, TNT, free Wifi access and courtesy plate with tea, coffee, and small cookies.

The restaurant is open from 12pm to 2 pm and from 7pm to 10pm. Come and discover the new concept imagined by Patrick Jouin, designer. Bar&Lounge, seminar room...



Standing

3 stars

Rooms

Capacity : 88 (adjoining family rooms)

minimum : 67 €

maximum : 140 €

Campanile created a new vision of comfort and modernity: come and discover our rooms and bathrooms completely renovated (bath, shower, hair dryer...) LCD TV, TNT, Canal +, free WIFI, Very high-quality bedding, duvet. Business corner, electrical outlet, courtesy plate with coffee maker, tea and little cakes.

Dining out

108 Dining out

Breakfast

9 €

Opening hours

5.30 am to 11 pm

Opening periods

all the year

Open on Sunday

Practical information

Groups: 170 people.

It's possible to rent a room for business stay.

Accessible places to disabled people: bar, restaurant, hall

"the restaurant": let yourself be surprised by the atmosphere imagined by the designer Patrick Jouin: sleek styling, comfortable furniture and warm light.

Bar&Lounge, terrace, animals accepted at the hotel only, free wifi, lift

"Tickets Restaurant" accepted

Travelers checks accepted

Equipment

- Restaurant
- Parking
- Ascenseur
- Climatisation
- Accès handicapés
- Animaux acceptés
- Salle de séminaire
- Accès Internet

Personal information

1083 rue Henri Becquerel

34000 MONTPELLIER

Tel : 33 (0)4 67 64 85 85

fax : 33 (0)4 67 22 19 25

contact by e-mail : montpellier.lemillenaire@campanile.fr

visit Web site : <http://www.campanile.com>

lat : 43.6152247 - lon : 3.9144789