

 **Hiring / 4 people ******

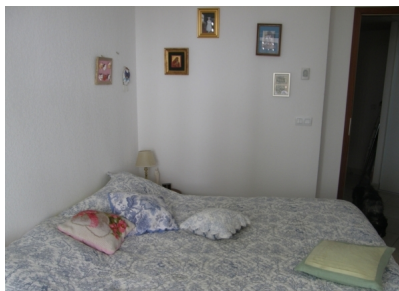
Holiday rentals

Montpellier - Montpellier

T2 (48 m²) in a beautiful and modern secure apartment at the 5th floor, handicap accessibility, American kitchen and fridge.

Located next to the tramway line 1, stop "Port Marianne" and 1km from the city center. Near from Odysseum and from the beaches road.

We accept pets. Terrace (17 m²), garage, color TV, TNT, DVD, air-conditionning, Internet, lift.



Standing

4 stars

Capacity

Number of people : 4

OFFICE DE TOURISME

Number of rooms : 1

Surface : 48 m2

Rates

Rate for 1 week :

- minimum : 380 €

- maximum : 600 €

Opening hours

Except owner agreement, arrival and departure on saturday.

Arrival after 4 PM. Departure before 11 AM.

Out of these hours please contact owner.

Opening periods

This apartment is available at hiring from March 31st to November 17th.

Practical information

The apartment is NO SMOKING.

Roofed terrace of 17 square metres.

Available on demand : baby bed, baby chair and extra child bed.

Possible hiring at month please contact owner for price and availability.

Direct access by tram to Odysseum playing and shopping center.

Personal parking accessible by lift direct to apartment.

Equipment

- Parking
- Ascenseur
- Climatisation
- Animaux acceptés

- Accès Internet

Personal information

52, rue de Syracuse

Rés. Gallia, Hall1

34000 Montpellier

Tel : 33 (0)4 67 97 10 35

33 (0)6 60 78 48 14

contact by e-mail : jh.belot@orange.fr

lat : 43.6005528 - lon : 3.8981838